



5G peripheral device for corporate routers

Compatible 5G enabler for routers with no built-in wireless support

Introduction

5G Mobile connections are an ideal backup infrastructure for fixed WAN services. Unfortunately, however, corporate routers are not usually equipped to handle them, or are installed in poorly accessible locations and hence coverage is poor. Teldat-5Ge is the solution to this problem because it connects the corporate router to mobile networks easily, economically and non-intrusively.

Teldat-5Ge integrates 5G mobile connectivity and can be installed wherever there is adequate network coverage, using Ethernet high speed port to connect to the corporate router.

Product Highlights

- ▶ Non-intrusive and compatible with other routers
- ▶ Easy and quick installation
- ▶ You can place the device anywhere in the office
- ▶ You only need an Ethernet connection
- ▶ PoE+ support
- ▶ Standards-based
- ▶ No management required

Interfaces

1 x 5G-NR (Sub-6GHz)

1 x 2,5Gb Ethernet LAN (Antenna Mode)

1 x 2,5Gb Ethernet WAN (Router Mode)

4 x external antenna connectors

Teldat-5Ge(New)

3GPP Release 15 (NSA and SA modes)

If using PoE+, only LAN cable needed

Enabled by an optional license

Indoor antennas included

Competitive Advantage

Quick and easy installation

No configuration required, just connect to Ethernet and it's ready to go. If PoE+ is enabled, you only need the Ethernet cable; if not, you'll need to plug it.

No management required

The device uses auto provisioning to download the configuration (similar to an IP phone) from the office router.

The corporate router maintains control

The router controls the mobile connection, applying the same connection, security and QoS policies used for the fixed connection.

Discreet, unobtrusive design

To achieve maximum coverage, the device is usually placed somewhere on a wall inside the office where it can go unnoticed.

Scenarios

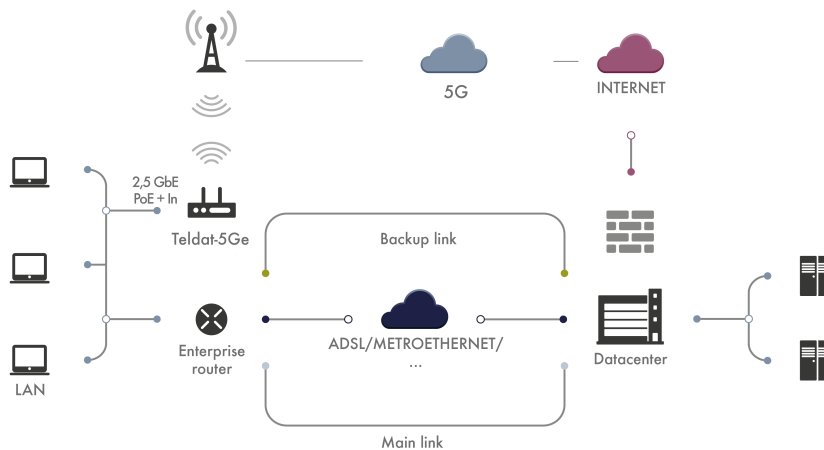


Figure: Peripheral device for the existing router

Key Features

It Integrates 5G access into existing infrastructure The router that manages the fixed connections also controls the mobile connections and therefore enforces the same security and QoS policies.

Standards-based The setup process implies standard features. A VLAN is used to set up the data connection between the router and the Teldat-5Ge, creating what is, for all intents and purposes, a virtual interface on the router.

Automatic provisioning Teldat-5Ge does not store the configuration but it receives it via DHCP during startup. This means that you do not need to do anything on the device before physically installing it.

No management required The device can be managed from the existing router, so you do not need to reserve an address for managing the device or register it on the management systems.

Installation using a single cable With Power over Ethernet+ support (a PoE+ injector is available for non-PoE+ switches) it can be powered simply using a single Ethernet cable making installation quick and easy.

Tabletop to wall installation Designed to be mounted on a wall to get the best signal strength.

Specifically designed to be placed inside the office The device goes unnoticed in work/transit areas thanks to its compact size and elegant design.

Standalone router option In "router mode" the Teldat-5Ge is a standalone solution that provides copper and 5G WAN connectivity to remote offices.

HARDWARE TECHNICAL FEATURES

Gigabit connection to the local network

1x 2,5GbE LAN port and 1x 2,5GbE WAN port(Optional)

RJ45 connector

Dimensions and weight

Length x Width x Height: 197 x 197 x 55 mm

Approximate weight: TBD

Format: Desktop and wall

5G: Sub 6Ghz NSA and SA modes. Mimo 4x4/2x2

NSA TDD: Max 2.5Gbps(DL)/ 650Mbps(UL).SA TDD: Max

2.1Gbps(DL)/ 450Mbps (UL)

5G FR1 bands: n1, n2, n3, n5, n7, n8, n12, n20, n25, n28, n38, n40, n41, n48, n66, n71, n77, n78, n79

Four external antennas

SMA connector

Dual SIM support

Environmental specifications

Temperature: 0 to 45 °C

Relative humidity: 5 to 90%

Atmospheric pressure: 700 to 1060 mbars

SOFTWARE TECHNICAL FEATURES

Auto-provisioning

Parameters received via DHCP

The office router is normally the DHCP server

Install and ready to go

IP protocol(1)*

ARP, ARP Proxy, MTU discovery, NAT, ECMP, BFD

RIP, OSPF, BGP, policy-based static and dynamic routing

Virtual Router Forwarding (Multi-VRF)

Security(1)*

IPSec support in transport and tunnel mode

Pre-shared authentication, RSA, Certificates, MDS, SHA-2

Encryption: DES (56 bits), 3DES (168 bits), AES (128, 192 and 256 bits)

IP services*

DHCP, DNS, FTP, SFTP, SSH, Telnet server and client

NTP, LDAP, Syslog, SCP client. TFTP Server, DHCP Relay , dynDNS

Phone terminal management using with SIP

IPv6*

Dual Stack, IP6oIPv4, IPv4oIPv6, GRE, 6rd, DHCPv6, ICMPv6, SLAAC

Static and dynamic routing RIPng, OSPFv3, MP-BGP

Multicast: MLD, MLDv2, Listener, Querier

Communication with the router

Connection to the router via VLAN

Use of existing Ethernet infrastructure

Manageable from the router

IP protocol (2)*

Multicast: IGMP (v1, v2, v3), PIM-SM, MSDP, MLD, MLDv2

IPSLA service probes (delay, package loss, jitter)

High availability: VRRP, TVRP (HSRP compatible)

Security (2)*

Certificates: CSR, SCEP, X.509v3, PKIX, LDAP revocation

Static and dynamic access lists and session-based Firewall

DoS and DDoS detection

Quality of service*

Classification, marking, BW management, BW prioritization and limitation

Up to 32 types 16 queues per interface

Strict policies (PQ), Low latency (LLQ), by weight/type (WFQ, CBWFQ)

Management*

Netflow, RMON V5 and V9, SNMPv1, v2c y v3, Syslog support

Manageable via SMS.Wireshark-compatible remote traffic capture

(*) Features available in router mode only.

ADDITIONAL TECHNICAL FEATURES

LEDs

PWR: Power/Error, SIM: Active SIM, Cell: Cellular status

Ethernet 1: Link / Traffic LAN1, Ethernet 2: Link / Traffic LAN2

FLEXIBLE

COMMUNICATIONS SOLUTIONS

THAT GROW WITH YOU.

5G peripheral device for corporate routers

Compatible 5G enabler for routers with no built-in wireless support



Teldat is a leading provider in Enterprise Communications equipment and Services for the top corporate to mid-sized and SME markets.

About TELDAT



ROUTERS | Wi-Fi | MANAGEMENT | TRANSPORT | SMART GRID | INDUSTRIAL | VoIP | CLOUD | SECURITY | NFV |

Teldat Group is a leading technology holding that designs, manufactures and distributes advanced Internetworking platforms for corporate environments, providing new and cutting-edge communication solutions without ever losing sight of its customers real requirements. Teldat's solutions development is based on proprietary technology, which is in the Group's DNA. This allows Teldat to be a leading provider in Enterprise Communications equipment and Services for the top corporate to midsized markets, as well as the SME and SoHo markets.

From a geographical viewpoint, Teldat Group has a presence in all continents, with its corporate headquarters located in Spain, and operational affiliates in Europe (Germany, Austria, Portugal, Italy and France) and in LATAM (Mexico and Brazil), as well as two business development offices in USA and China.

 **Teldat** | **GROUP** | Headquarters

Spain

Teldat S.A.
Parque Tecnológico de Madrid
Tres Cantos - 28760
Madrid (Spain)
Phone: +34 91 807 6565
info@teldat.com

Our sales offices contact details are on www.teldat.com

Germany

bintec elmeg GmbH
Suedwestpark 94. 90449
Nuremberg (Germany)
Phone: +49 911 9673 0
info@bintec-elmeg.com



©2018 Teldat S.A. | This data sheet shall be used only for information purposes. Teldat reserves the right to modify any specification without prior notice. All trademarks mentioned in this document are the property of their respective owners. Teldat accepts no responsibility for the accuracy of the information from third parties contained on this document.

Publish Date: March 18, 2021
Version: 20210318163243